

# PRIMERS AND BARRIER COATS



## The First Step in Protecting a Quality Finish

Selecting the right primer for your renovation project is critical to increasing the overall quality and durability of your paint finish. The PPG Building Renewal™ Program offers a range of fluoropolymer, epoxy, acrylic and specialty primers and barrier coats designed for a variety of substrates and surface challenges. With this complete line of quality primers available, PPG can assist you in selecting the right surface-preparation products for your renovation project.

## PRIMERS

### Specialty Primers

#### Coraflon® ADS Wash Primer

Coraflon ADS Wash Primer is recommended as a pretreatment for direct application to exterior or interior metal surfaces including steel, aluminum or galvanized steel. The wash primer provides outstanding adhesion to many bare metal surfaces.

**Flat Sheen** **728g/L VOC**

#### Availability

ADS225 A Component	(1 Gallon)
ADS226 B Component - Acid Component	(Quart)
ADS703 Thinner	(1 Gallon)

### Epoxy Primers

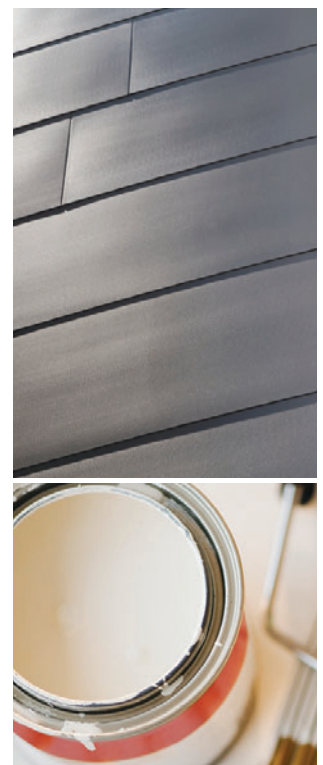
#### Coraflon ADS PVDF Bonding Primer

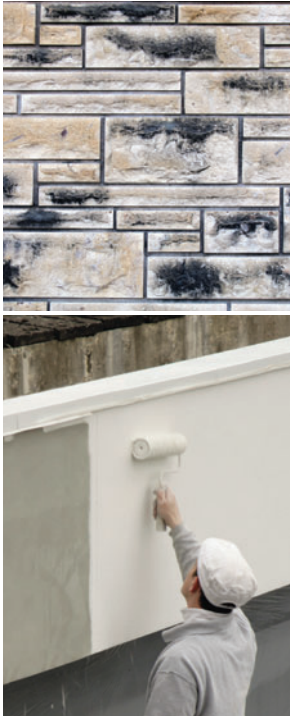
Coraflon ADS Epoxy Bonding Primer is recommended as an intermediate coat or tie coat over previously applied PVDF coatings on exterior or interior steel or aluminum substrates.

**Satin Sheen** **227g/L VOC**

#### Availability

ADS510 White – A Component	(Quart, 1 Gallon, 5 Gallon)
ADS511 Gray – A Component	(Quart, 1 Gallon, 5 Gallon)
ADS512 B Component	(Quart, 1 Gallon, 5 Gallon)





**PPG PERMA-CRETE Alkali Resistant Primer**

PERMA-CRETE Alkali Resistant Primer is specifically designed for interior and exterior, above-grade, wood, plaster, wallboard and masonry surfaces. This primer provides excellent sealing and stain-blocking performance. PERMA-CRETE is formulated to seal and protect the topcoat from hot alkali found in plaster, masonry and cement. It blocks out stains such as water, smoke, ink, markers and tannins.

<b>Non-Flat &gt;5</b>	<b>88g/L VOC</b>
Availability	
4-603 White	(1 Gallon, 5 Gallons)

**PPG PERMA-CRETE High Build 100% Acrylic Primer**

PERMA-CRETE High Build 100% Acrylic Primer is specifically designed for priming interior and exterior, above-grade masonry substrates requiring high-performance finishes. It is alkali and efflorescence resistant. Additionally, this high-build primer is breathable and provides resistance against water, UV light and staining. When used with PERMA-CRETE LTC Concrete Block/Masonry Surfacers and topcoated with appropriate PERMA-CRETE topcoats, this primer passes TT-C-555B and ASTM D6904-3 for wind-driven rain.

<b>Flat</b>	<b>88g/L VOC</b>
Availability	
4-2 White	(1 Gallon, 5 Gallons)

**PPG PERMA-CRETE Concrete Stucco Primer**

PERMA-CRETE Concrete Stucco Primer is specifically designed for exterior, above-grade, non-staining wood, fiber cement, wallboard, stucco, concrete and masonry surfaces. This primer provides a uniform seal and has a flexible film to minimize checking and cracking. This product is formulated to provide good holdout, adhesion and alkali and blister resistance; it also provides mildew resistance on the dry film.

<b>Flat</b>	<b>84g/L VOC</b>
Availability	
4-503 White	(1 Gallon)

**PPG PERMA-CRETE Interior/Exterior Acrylic Masonry Surface Sealer**

PERMA-CRETE Interior/Exterior Acrylic Masonry Surface Sealers are fast-drying, water-borne, clear or pigmented acrylic sealers used primarily to seal chalky or porous stucco, concrete or masonry walls prior to painting or waterproofing. They are designed to deeply penetrate and seal new, porous surfaces as well as old, dusty or chalky paint films and substrates.

<b>Satin (normally penetrates into a flat sheen)</b>	<b>228g/L VOC</b>
Availability	
4-808 Clear	(1 Gallon, 5 Gallons)
4-809 Pigmented	(1 Gallon, 5 Gallons)





**Epoxy Primers (Continued)**

**Corafon® ADS Zinc Rich Epoxy Primer**

Corafon ADS Zinc Rich Epoxy Primer is a corrosion-resistant primer for ferrous metal. This primer can be used for field touch-up of shop-applied, inorganic zinc primers prior to the application of high-performance topcoats.

**Matte Sheen** **405g/L VOC**

Availability

ADS570A Reddish Gray – A Component	(2.25 Gallons in 5 Gallon Container)
ADS570B Curing Agent – B Component	(1 Gallon)
ADS570Z Zinc Dust – Z Component	(105 Pounds Filled in a 5 Gallon Container)

**Corafon ADS Epoxy Intermediate Primer**

Corafon ADS Epoxy Intermediate Primer is recommended as an intermediate coat or tie coat over previously coated or bare steel, aluminum substrates, ferrous metal and galvanized steel.

**Satin Sheen** **227g/L VOC**

Availability

ADS573 White – A Component	(Quart, 1 Gallon, 5 Gallon)
ADS572 Gray – A Component	(Quart, 1 Gallon, 5 Gallon)
ADS574 B Component	(Quart, 1 Gallon, 5 Gallon)

**Acrylics**

**BRP 100% Acrylic Primer**

BRP 100% Acrylic Primer is a general-purpose, 100% acrylic latex primer for use on properly prepared substrates including metal, masonry, plaster and drywall surfaces.

**Flat Sheen** **90g/L VOC**

Availability

BRP4912 White	(1 Gallon, 5 Gallon)
BRP4909 Gray	(1 Gallon, 5 Gallon)

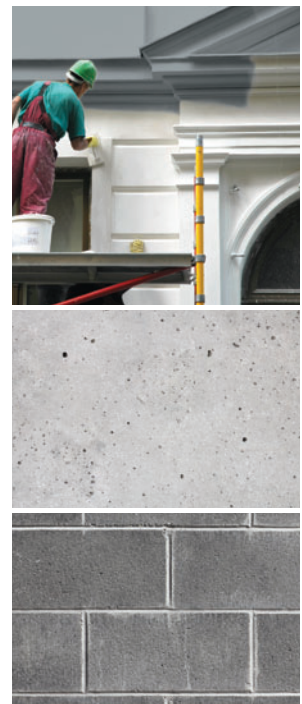
**PPG PERMA-CRETE® LTC Concrete Block & Masonry Surfacer**

PERMA-CRETE LTC Concrete Block & Masonry Surfacer is a premium interior/exterior, lightweight, acrylic latex block filler and surfacer for all types of properly prepared concrete and masonry surfaces. This product provides smoothing, filling and leveling on all types of masonry and concrete surfaces. This PERMA-CRETE product can be applied to new masonry including concrete and stucco that has cured seven days or more (alkali resistant from 8 to 13 pH).

**Flat** **60g/L VOC**

Availability

4-100 White	(1 Gallon, 5 Gallons)
-------------	-----------------------



**Acrylics (Continued)**

**PPG PERMA-CRETE® Pigmented Bonding Coat**

PERMA-CRETE Pigmented Bonding Coat is an exterior, deep-penetrating, tintable, pigmented, epoxy ester bonding primer used to prime, seal and solidify chalky masonry and paint surfaces. It is designed to deeply penetrate and seal new, porous surfaces; old, chalky paint films; or badly weathered brick, concrete, stucco and other masonry surfaces.

<b>Flat</b>	<b>391g/L VOC</b>
<hr/>	
Availability	
4-898 Off White	(1 Gallon, 5 Gallons)



**BARRIER COATS**

**Coraflon® ADS Barrier Coat**

Coraflon ADS Barrier Coat is a two-component fluoropolymer finish for use under selected mica colors, enhancing the durability of the complete coating system. Please contact PPG Architectural Coatings at 1.888.PPG.IDEA for specific recommendations.

<b>Satin</b>	<b>156g/L VOC</b>
<hr/>	
Availability	
ADS564 Off White – A Component	(1 Gallon)
ADS1B Curing Agent – B Component	(Quart)

**Coraflon Urethane Mastic DTM**

Coraflon Urethane Mastic DTM is a high-solids, high-build, two-component acrylic urethane formulated for direct-to-metal applications. This product can be used in areas where VOC requirements are less than 250g/L VOC and can help earn LEED credits.

<b>Gloss</b>	<b>241g/L VOC</b>
<hr/>	
Availability	
ADS651 White Base – A Component	(1 Gallon, 5 Gallon)
ADS650 Neutral Base – A Component	(1 Gallon, 5 Gallon)
ADS650B Curing Agent – B Component	(Quart)

**FOR ADDITIONAL INFORMATION**

For a complete product listing, please visit [www.ppgbrp.com](http://www.ppgbrp.com). Contact your PPG representative or call **1.888.PPG.IDEA (1.888.774.4332)** to learn more about Building Renewal™ Primers and Barrier Coats and how PPG can help you restore your building's beauty, performance and profit potential. Your PPG specialist can help you select the right coating systems and colors, plus provide field support to ensure your job gets done right.