



**MACHINE APPLIED
COATINGS**

DURACOLOR™ SEMI-TRANSPARENT

Semi-Transparent finish for fiber cement and composite sidings



RIDE THE WAVE OF DURABILITY

Specially formulated for fiber cement boards with Duracolor™ FC applied as a solid color base coat, Duracolor™ S/T Exterior Semi-Transparent finish provides maximum durability and color retention.

- Ideal for use on properly prepared fiber cement boards and composite siding
- Two coat system with custom colors utilizing Duracolor™ FC as a base coat
- Product can be applied by brush coating and spray
- 100% acrylic latex
- Available in one and five gallon containers

5 Bases:

(custom colors available)

- White
- Yellow
- Red
- Brown
- Black

5 Standard Color Palette:

(for more information regarding standard colors, please see technical data bulletin)



• Cedar



• Maple



• Redwood



• Mahogany



• Honey Gold

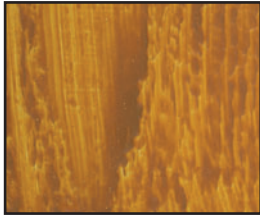
*Carries a 15-year warranty**

**See limited warranty for further details.*

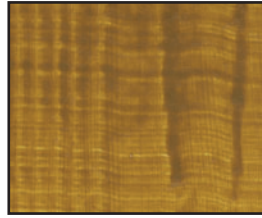


DURACOLOR SEMI-TRANSPARENT — RIGOROUSLY TESTED AGAINST THE COMPETITION

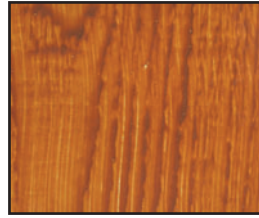
Standard Color Palette



Cedar



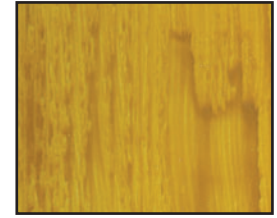
Maple



Redwood



Mahogany



Honey Gold

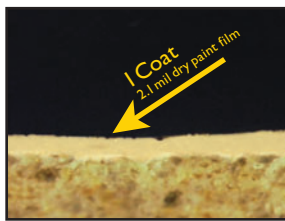
All standard colors are achieved by applying the following ST Bases, mixed at the recommended ratios, over one coat of Duracolor FC 54557 Sandstone.

High-Film Base Coat

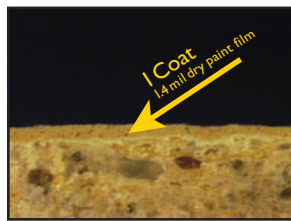
FEATURE: High-Volume Solids

FUNCTION: Increased Film Build

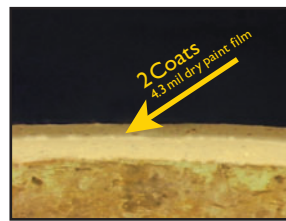
BENEFIT: Better Color Consistency



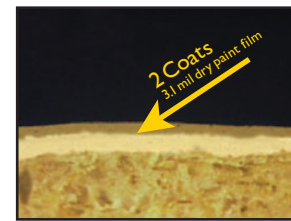
Duracolor FC primer coat



Leading Competitor



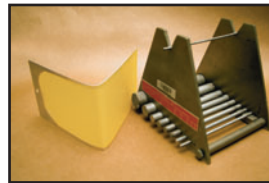
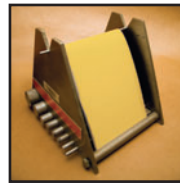
Duracolor SIT topcoat on Duracolor FC



Leading Competitor

Test paints were applied by brush at equal weight to fiber cement substrate. The panels were heat-dried and when dry, the panels were cut, sanded smooth and photographed at 160x magnification.

Flexibility



Duracolor Semi-Transparent topcoat was applied to a metal primer for the Mandrel Bend Test – the Duracolor Semi-Transparent finish provides outstanding flexibility and does not crack under extreme pressure. ASTM D 522

Color Durability



Before

After



Before

After



Before

After

Fiber cement panels were coated with a base coat of Duracolor FC, topcoated with Duracolor Semi-Transparent, and tested in extreme conditions in an accelerated weathering scenario (5,000 hours).

ASTM G 155